



**Kikori River Basin
Conservation Blueprint
Southern Highlands and Gulf Provinces
PNG**



**By Ted Mamu
Terrestrial Programme Manager
&
Oala Iuda
GIS Officer**

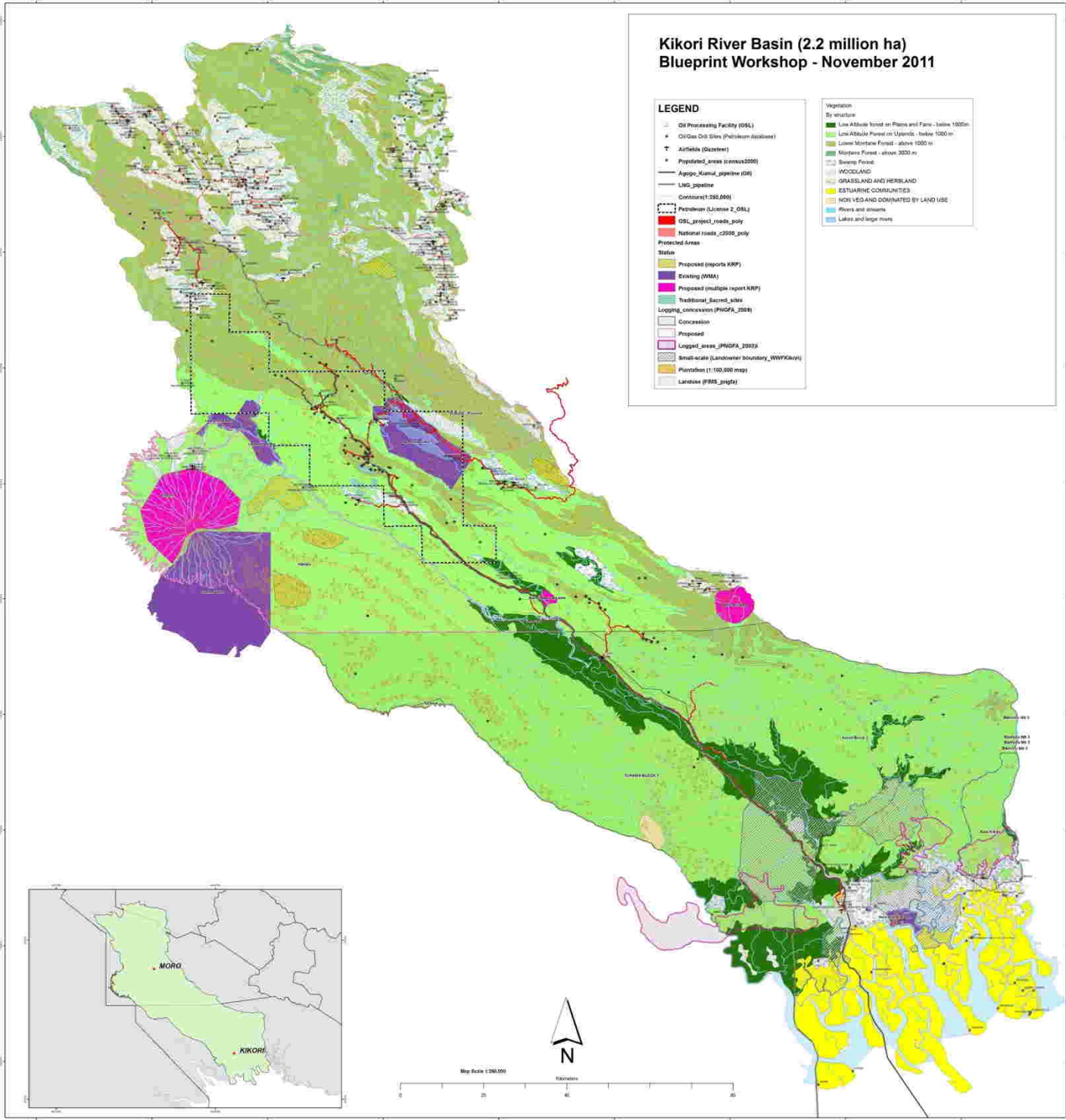
**WWF Western Melanesia Programme Office
Papua New Guinea / Solomon Islands**

Kikori River Basin (2.2 million ha) Blueprint Workshop - November 2011

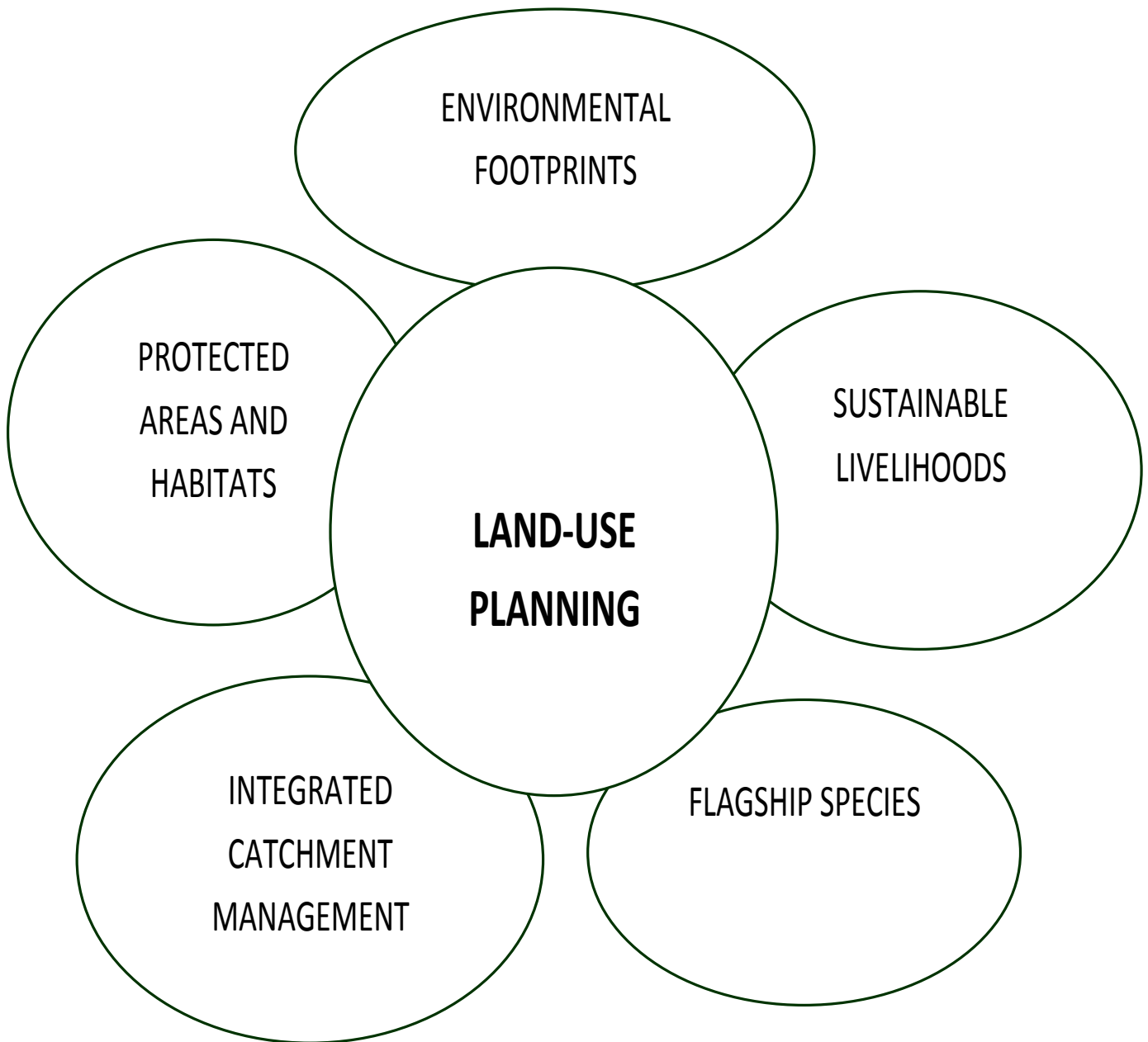
LEGEND

- Oil Processing Facility (OSL)
- Oil/Gas Oil Sites (Petroleum database)
- Airfields (Dactar)
- Populated_areas (census2000)
- Apgo_Kumul_pipeline (DR)
- LNG_pipeline
- Contours(1:250,000)
- Petroleum (License 2_OSL)
- OSL_project_roads_poly
- National roads_2008_poly
- Protected Areas
- State
 - Proposed (reports KRPF)
 - Existing (MBA)
 - Proposed (multiple report KRPF)
 - Traditional_Secret_sites
 - Logging_concession (FMGFA_2008)
 - Concession
 - Proposed
 - Logged_areas_FMGFA_2008A
 - Small-scale (Landowner boundary_WWYKikori)
 - Plantation (1:100,000 map)
 - Landside (FMS_pmgfa)

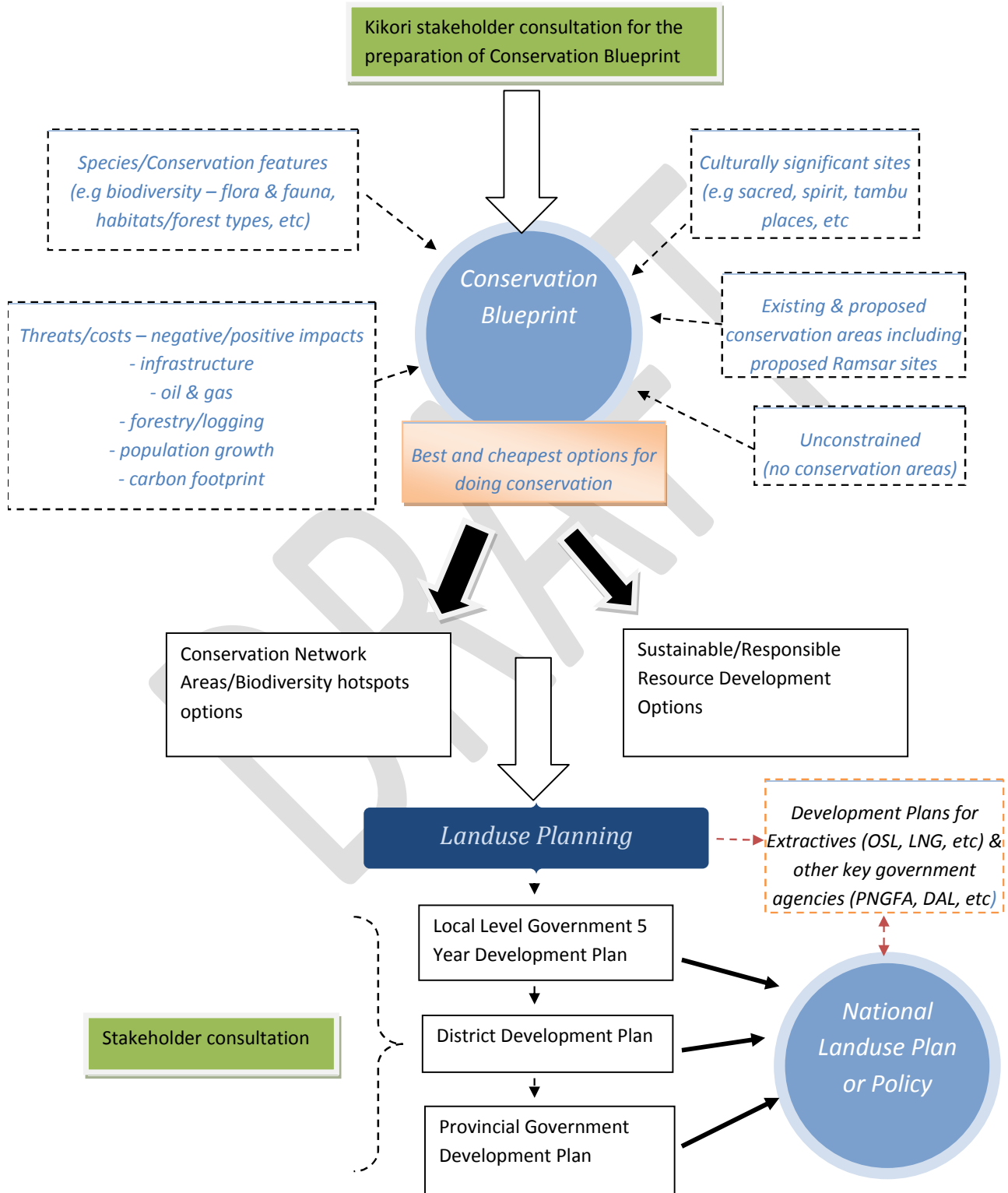
- #### Vegetation
- By structure
- Low Altitude forest on Plains and Pans - below 1000m
 - Low Altitude Forest on Uplands - below 500 m
 - Lower Montane Forest - above 1000 m
 - Midstore Forest - above 3000 m
 - Swamp Forest
 - WOODLAND
 - GRASSLAND AND HERBLAND
 - ESTUARINE COMMUNITIES
 - NON-VEG AND DOMINATED BY LAND USE
 - Rivers and streams
 - Lakes and large rivers

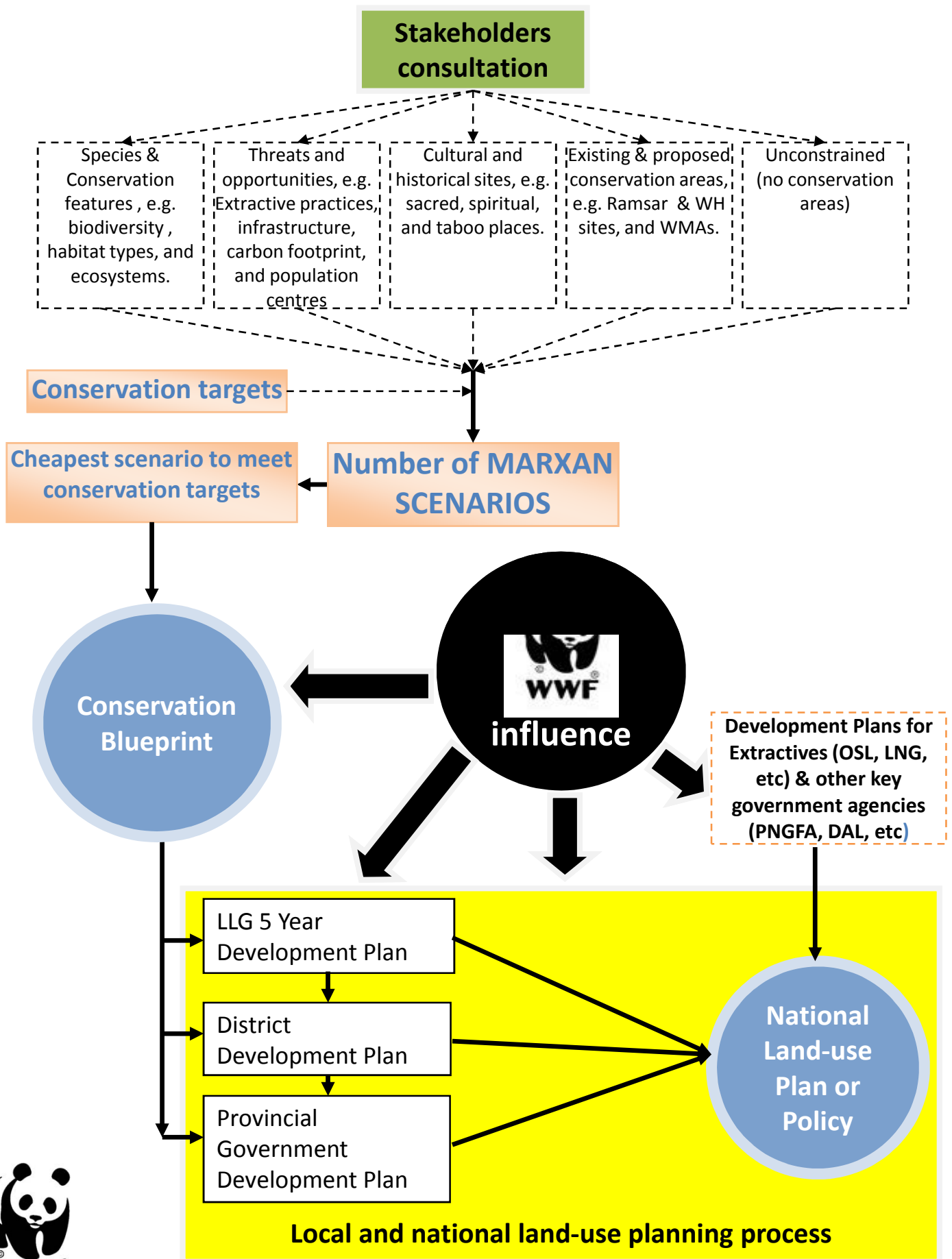


Graphic representation of linkages between the six main thematic areas of the Kikori River Basin Programme



Flow Chart – Kikori Conservation Blueprint Process





Stakeholder consultation for the Kikori conservation blueprint at the WWF Port Moresby office with PNG National Museum (chief archaeologist) and local community reps from Kikori River Basin



Comparing the WHRC Total Biomass Carbon in Figure below and the “cheapest” scenario of Figure on next slide there are a lot of overlaps. The darker areas in the Total Biomass Carbon figure are coinciding with the red areas in the Cheapest Scenario Figure. This might provide in the future great opportunities once the project starts embarking on the sustainable financing as REDD+ might be considered as one of the SF options.

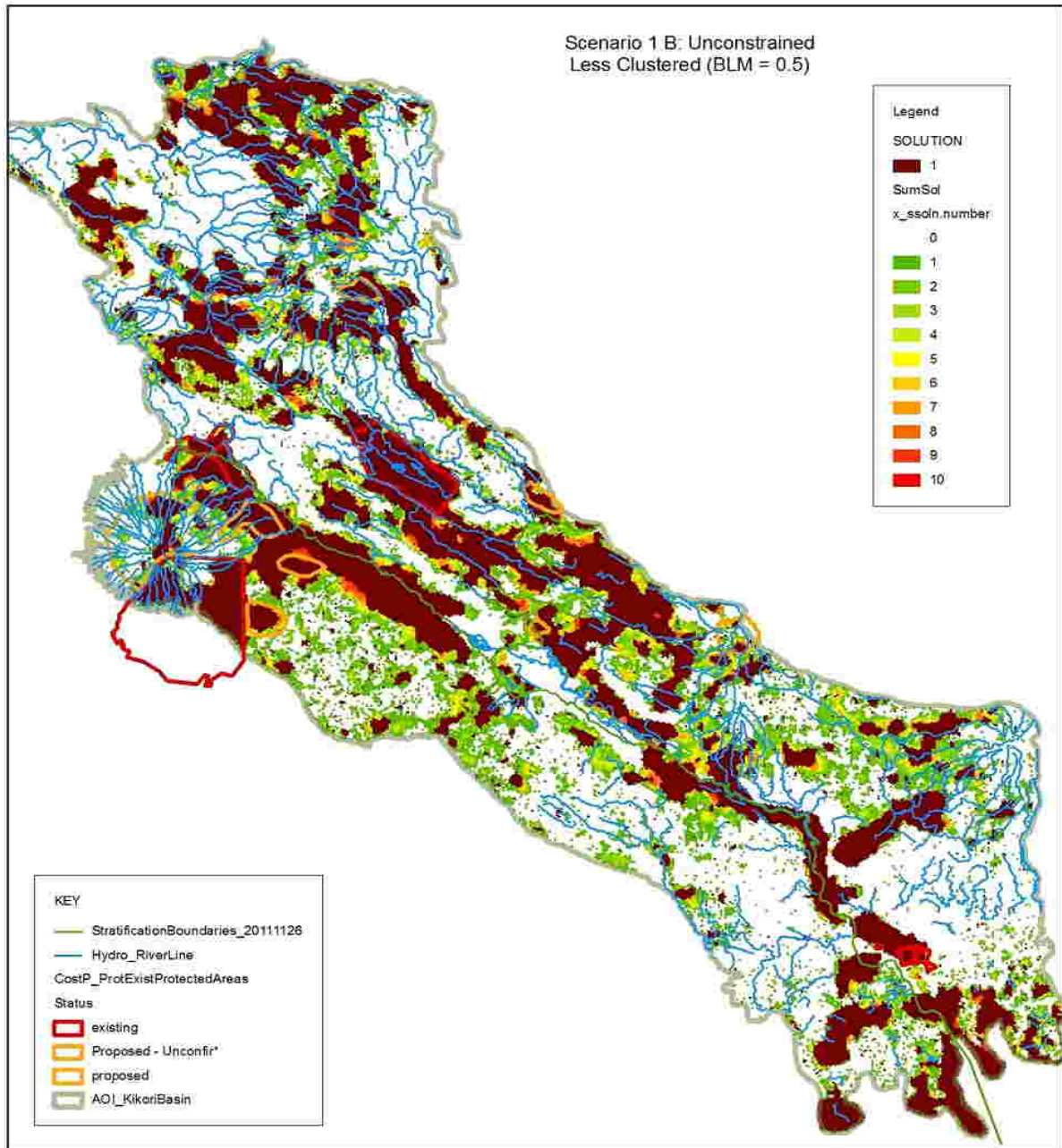


Cost Layer: Positive and Negative plus Biomass data layer merged result map



Area = 2.4 million hectares

Cheapest MARXAN scenario; Kikori River Basin Conservation Blueprint



Sustainable Livelihoods – focusing on options for sustainable income generation

The sustainable livelihood component of the project is mainly focusing on sustainable financing, which might include REDD+ and Payment for Ecosystem Services (PES) options, of the implementation of the Kikori River Basin Conservation Blueprint once incorporated in the local land-use plans, to ensure that local and indigenous people of the Kikori River Basin area are not deprived from income out of the protected natural resources. Options that will be considered to be part of the sustainable financing plan include the use of the biodiversity offsets that ExxonMobil is contractually required to invest as compensation for lost of biodiversity due to their developments.

